

4962A4

4962A12

Harris County Appraisal District



0 50 100 200 Feet

PUBLICATION DATE: 3/10/2020

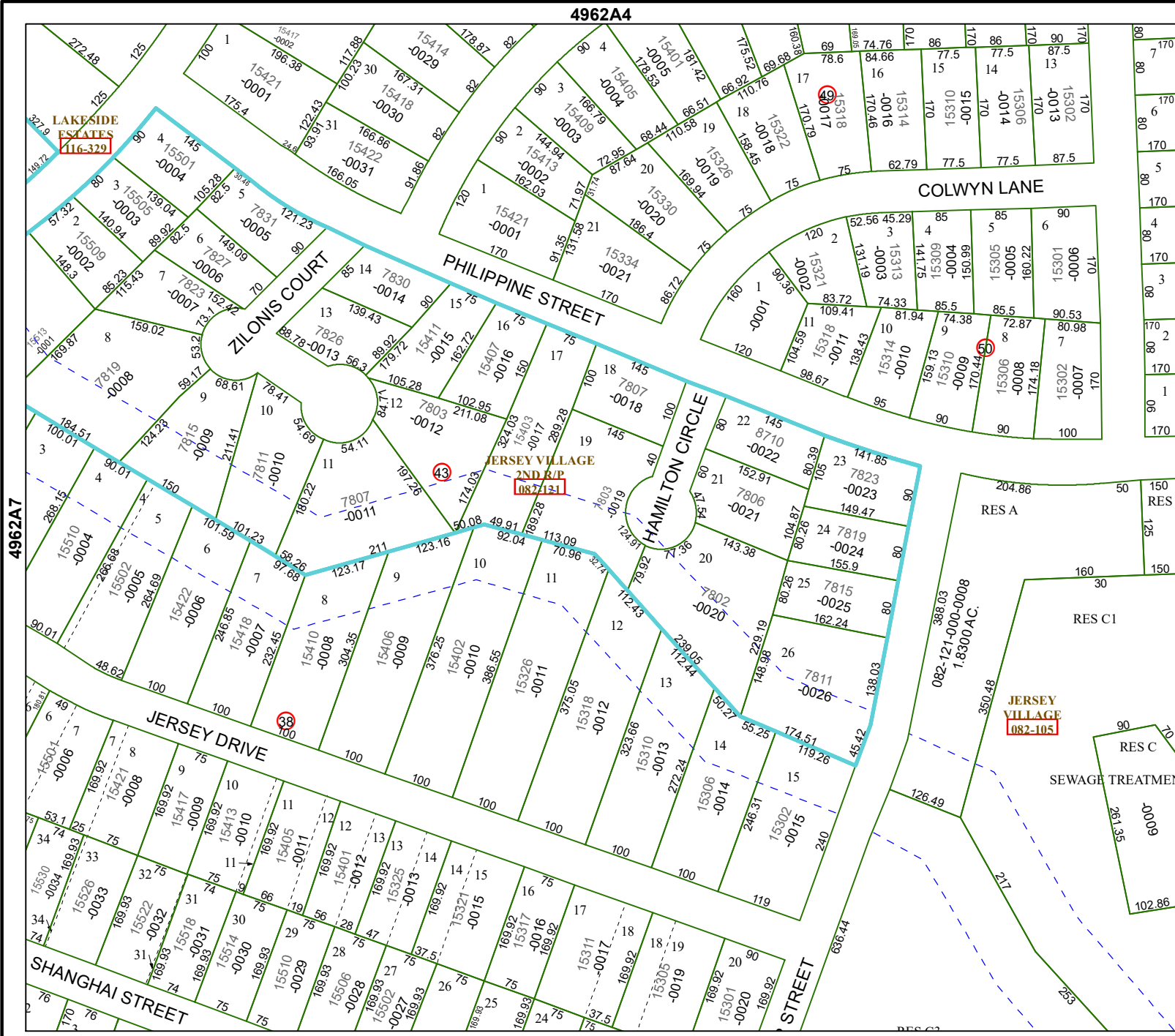
Geospatial or map data maintained by the Harris County Appraisal District is for informational purposes and may not have been prepared for or be suitable for legal, engineering, or surveying purposes. It does not represent an on-the-ground survey and only represents the approximate location of property boundaries.

MAP LOCATION



FACET 4962A8

2	3	4	1	2
6	7	8	5	6
10	11	12	9	10



4962A7

4962B5